



To Share

<b>BASQUE CROQUETTE ( 3pcs / 6pcs )</b> <i>Ossau-Iraty   Bayonne ham   capsicum sauce   pear chutney</i>  9 / 16	<b>TIGER PRAWN BITES</b> <i>gribiche sauce</i>  16
---	---

**FRENCH FRIES / TRUFFLE FRIES 8 / 11**  
*kombu | Parmigiano Reggiano*  
*\*add freshly shaved black truffle - 3g \$10*

**RAGOUT TOAST 20**  
*beef cheek & veal tongue stew on artisan sourdough bread |  
capsicum sauce | Parmigiano Reggiano | mesclun salad*

**AFFINATED FRENCH FARMED CHEESE PLATTER**  
**Single item 50g / 100g / 200g 12 / 23 / 39**  
*Brie de Meaux | Morbier | Comté du Jura  
18 months | Ossau-Iraty*

**CHARCUTERIE PLATTER**  
**Single item 50g / large 200g 9 / 32**  
*chorizo Iberico de bellota | Bayonne ham |  
saucisson with herbs (dry sausage) | duck rillettes*

**LARGED MIX PLATTER 35**  
*selection of affinated French farmed cheese and charcuterie*

**HOMEMADE FOIE GRAS TERRINE - 80G 26**  
*coffee-infused | aloe vera | fresh blueberries*

**DUCK RILLETTES - 100G 12**

Prices in SGD. Subject to Service Charge and Prevailing Government Taxes.

NAPOLEON

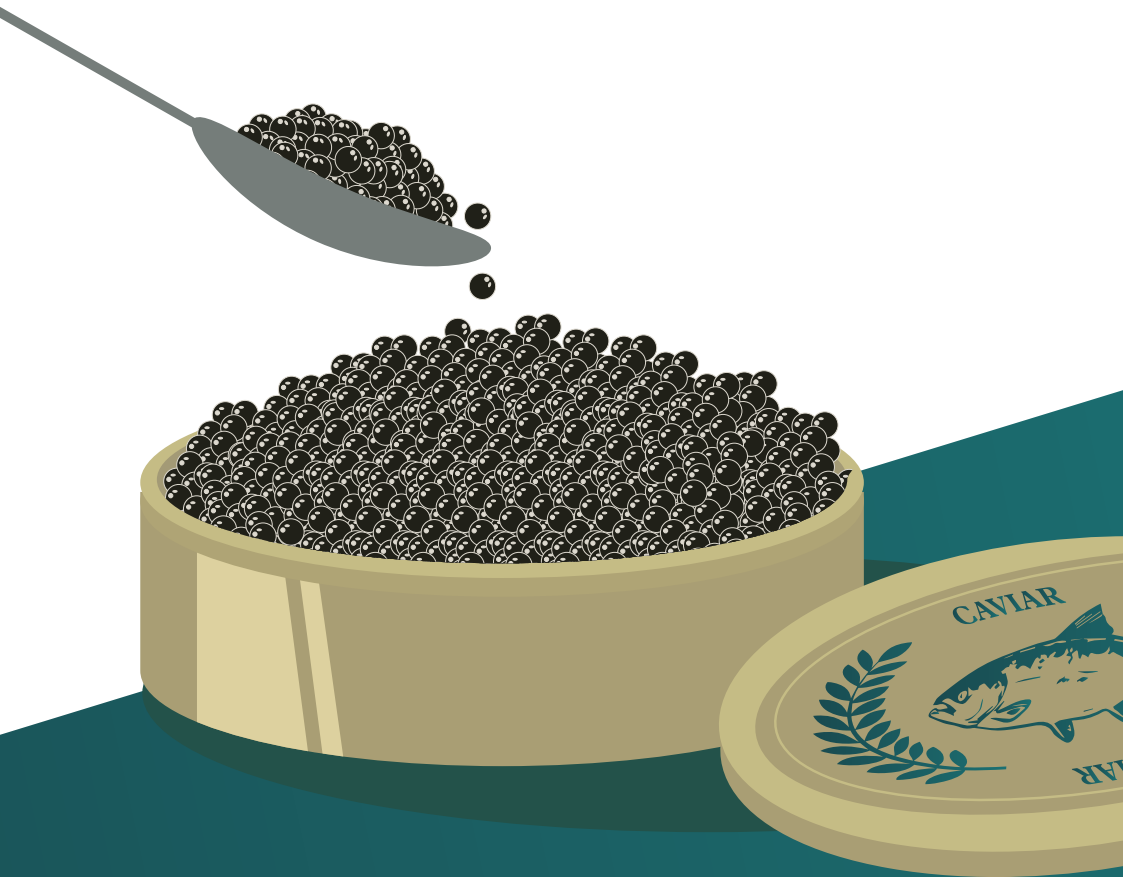


Prices in SGD. Subject to Service Charge and Prevailing Government Taxes.

NAPOLEON

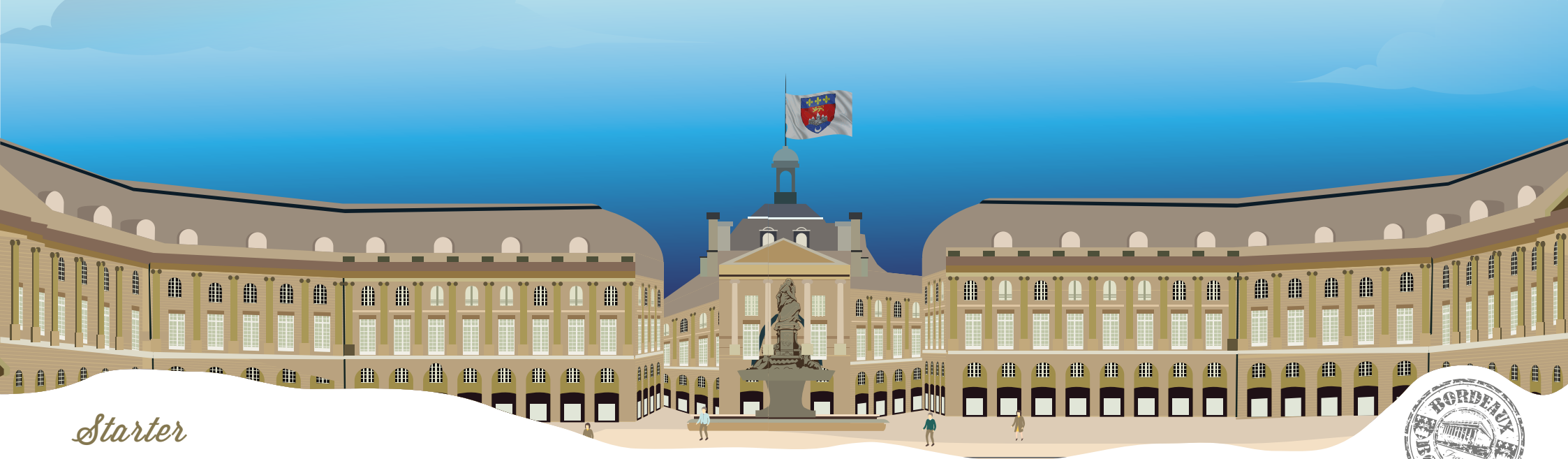
Caviar Selection

<b>N25 BAERI CAVIAR - 30G</b>  <i>from very mature Siberian "Acipenser Baeri" - texture is soft and creamy; the taste is sweet, nutty and savoury</i>  88	<b>N25 KALUGA RESERVE CAVIAR - 30G</b>  <i>from rare "Huso Dauricius" - perfect balance of salt and creamy flavours, very long and elegant aftertaste</i>  138
---	--



Prices in SGD. Subject to Service Charge and Prevailing Government Taxes.

NAPOLEON



## Starter

**SEASONAL SOUP** 12

**PÂTÉ EN CROÛTE - 80G** 18

*pork & chorizo terrine | Edmond Fallot mustard*

**RAINBOW TROUT TARTARE** 19

*Spanish red onion | cappers | granny smith apple | anchovy toast*

**VEAL TONGUE** 22

*grilled veal tongue | arugula & pine nut pesto | parsnip puree*

**SEARED HOKKAIDO SCALLOPS** 24

*roasted cauliflower puree | apple & white balsamic dressing | mint*  
*\*add freshly shaved black truffle - 3g \$10*

**HOMEMADE FOIE GRAS TERRINE - 80G** 26

*coffee-infused | aloe vera | fresh blueberries*

 **FRESH BURRATA SALAD - 150G / 300G** 29 / 42

*confit beetroot | baby spinach | pomegranate | honey & sesame dressing*

Prices in SGD. Subject to Service Charge and Prevailing Government Taxes.

NAPOLEON

## Pasta & Risotto

**CARBONARA** 24

*spaghettini | lardon | swiss brown mushrooms | garlic | parsley*

**TRUFFLE SCALLOP RISOTTO** 41

*fresh truffle | shitake mushroom | leek*

\*Vegetarian option available on request

Prices in SGD. Subject to Service Charge and Prevailing Government Taxes.

NAPOLEON

## Main

Our premium grass-fed Angus beef is sourced from selected cattle, raised in Australia

**HAND-CUT GRASS FED BEEF TARTARE** 35

*shallots | egg yolk | gherkins | capers | croutons | truffle French fries*  
*\*add freshly shaved black truffle - 3g \$10*

**GRILLED GRASS FED BEEF TENDERLOIN** 39

*mashed potatoes | charred Brussel sprouts | roasted grapes | foie gras sauce*

**PAN-ROASTED PERIGORD DUCK BREAST** 34

*carrot & ginger mousse | broccolini | carrot & pancetta bean stew | balsamic reduction*

**GRILLED IBERICO PORK PRESA** 46

*roasted corn and sauteed red cabbage | pumpkin puree with ginger | balsamic reduction*

**ATLANTIC TURBOT** 48

*sautéed spinach | parsnip puree | pomelo | sunflower seeds & Calvados beurre blanc*

**CHEF'S SPECIAL**

## Side

**MESCLUN SALAD** 8

**FRENCH FRIES** 8

**MASHED POTATOES** 8

**BRUSSEL SPROUTS** 8

Prices in SGD. Subject to Service Charge and Prevailing Government Taxes.

NAPOLEON



## A Sweet Goodbye

**CAFÉ GOURMAND** 15

*choice of coffee or tea with Chef's selection of 3 sweet bites*

*\*add a Cognac, Armagnac or Calvados for \$15*

**VALRHONA CHOCOLATE LAVA CAKE** 14

*Manjari & Kalingo chocolate | pistachio gelato*

**MADAGASCAR VANILLA CRÈME BRULÉE** 12.5

**ARTISAN GELATO** 7 / 12.5 (1 scoop / 2 scoops)

*Valrhona dark chocolate  
Vanilla  
Pistachio  
Lemon Lime sorbet*

**CHEF'S SPECIAL** Ask for the price

Prices in SGD. Subject to Service Charge and Prevailing Government Taxes.

NAPOLEON