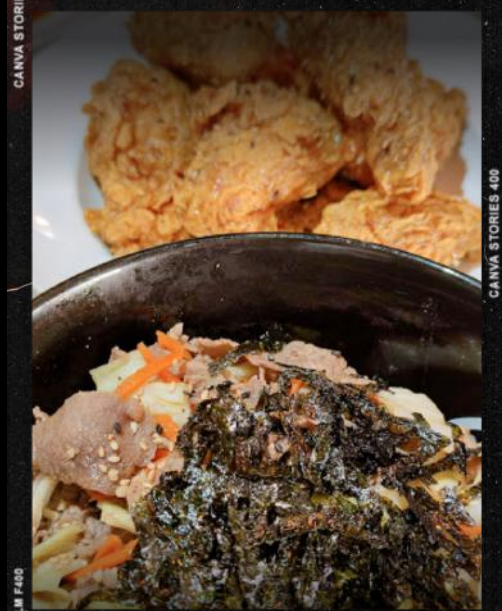




# BBQ Friend

YOUR NEXT DOOR KOREAN CUISINE

Together with **you**, we create,



Your Next Door **Korean Cuisine**



All Photo credits to Our **Dear BBQ Friends**

22 Lim Tua Tow Road, 547772

FB: @BBQFRIENDSG INSTA: BBQ.FRIEND

**-KOREAN BBQ SET A(\$79)** 



- BONELESS BEEF SHORT RIB - 갈비살
- LA BEEF SHORT RIB - LA 갈비
- THIN SLICED BEEF - 차돌박이 숙주



ALL SETS ARE SERVED WITH A **SOY BEAN PASTE SOUP** AND A **STEAMED EGG**

YOUR **SOUP** CAN BE CHANGED WITH TOP UP(\$8) REFER TO **PAGE 16** FOR VARIETIES

**-KOREAN BBQ SET B(\$69)**   



- LA BEEF SHORT RIB - LA 갈비
- MARINATED PORK COLLAR - 양념 목살
- THIN SLICED BLACK PORK BELLY - 대패숙주



ALL SETS ARE SERVED WITH A **SOY BEAN PASTE SOUP** AND A **STEAMED EGG**

YOUR **SOUP** CAN BE CHANGED WITH TOP UP(\$8) REFER TO **PAGE 16** FOR VARIETIES

**-KOREAN BBQ SET C(\$59)** 



- DUROC PORK BELLY - 듀록 삼겹살
- MARINATED PORK COLLAR - 양념 목살
- THIN SLICED BLACK PORK BELLY - 대패숙주



ALL SETS ARE SERVED WITH A **SOY BEAN PASTE SOUP** AND A **STEAMED EGG**

YOUR **SOUP** CAN BE CHANGED WITH TOP UP(\$8) REFER TO **PAGE 16** FOR VARIETIES



# BBQ Friend

YOUR NEXT DOOR KOREAN CUISINE



## Fresh, Juicy & Tasty.

BBQ FRIEND

# BBQ

# A LA CARTÉ

Dear Friends,

1. **All BBQ order** are served with wrap vegetables and sides.
2. **First order** must be **at least 2** portion from any meat choices
3. **And, Of course** the wrap vegetables are **refillable!**
4. **Our specialty** is **Duroc Pork Belly & Boneless Beef Short Rib.**

-FROM BBQ FRIEND





# BbQ Friend

YOUR NEXT DOOR KOREAN CUISINE

## -KOREAN BBQ(Beef)-



BONELESS BEEF SHORT RIB - 갈비살

PREMIUM BEEF WITH BEAUTIFUL MARBLING OF FATS AND MUSCLE. COOKED TO MEDIUM OR WELLDONE DEPENDING ON PREFERENCES

**-\$35-**

LA BEEF SHORT RIB - LA갈비

LA BEEF STANDS FOR LATERAL AXIS CUT OF BEEF SHORT RIB. SWEET SAUCE MARINATION ADDS FLAVOR TO THE JUICY MEAT ON THE BONE

**-\$35-**



THIN SLICED BEEF - 차돌숙주

THINLY SLICED BEEF SHORT PLATE MARINATED WITH HINTS OF SALT, PEPPER AND SESAME OIL WITH MUNG BEAN SPROUT.

**-\$25-**





# BbQ Friend

YOUR NEXT DOOR KOREAN CUISINE

## -KOREAN BBQ(Pork)-



### DUROC PORK BELLY - 듀록 삼겹살

SPANISH,DUROC PORK IS WELL KNOWN FOR THEIR JUICY AND FATTY MEAT WHICH MAKES THEM PERFECT BREED FOR QUALITY BBQ MEAT

**-\$25-**

### MARINATED PORK COLLAR - 양념 목살

JUICY PORK COLLAR MARINATED IN OUR BBQ FRIEND'S SWEET BLACK SAUCE

**-\$25-**



### THIN SLICED PORK BELLY - 대패숙주

WE USE SAME HIGH-QUALITY PORK BELLY, NOW THINLY SLICED WITH HINTS OF SALT, PEPPER AND SESAME OIL WITH MUNG BEAN SPROUT.

**-\$25-**

YOUR NEXT DOOR KOREAN CUISINE

BBQ Friend



**A LA**

**CARTE**

**- ALL DAY -**





# BBQ Friend

YOUR NEXT DOOR KOREAN CUISINE

## -Korean Fried Chicken Menu-

\$21.0 (HALF, 8 PIECES) , \$36.0 (WHOLE)

-MIX AND MATCH FOR 'WHOLE' SIZE-



### -GOLDEN FRIED CHICKEN-

Crispy, golden chicken tossed into fresh frying oil. All that crispy yet tender meat will leave you speechless

**50% CRISPY & 50% JUICY**

### -YANGNYUM CHICKEN-

A whole crispy chicken coated in our BBQ Friend's delicious sweet red Yangnyum sauce

**70% SWEET & 30% SPICY**



### -SOY SAUCE CHICKEN-

A whole crispy chicken coated in our BBQ Friend's mouthwatering Soy Sauce

**50% SWEET & 50% SAVOURY**

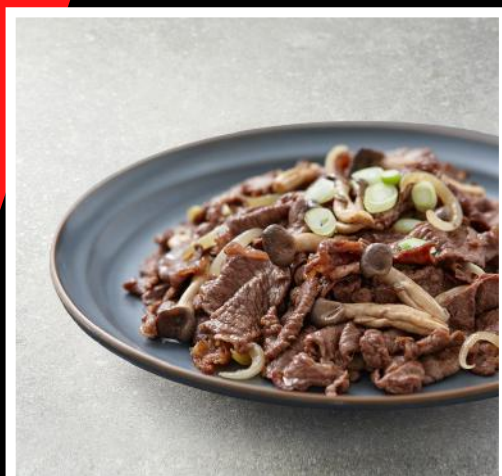




# BbQ Friend

YOUR NEXT DOOR KOREAN CUISINE

## -A La Carte-



BULGOGI - 불고기

KOREAN STYLE STIR-FRIED MEAT DISH  
WITH VEGETABLES

CHOICE OF BEEF OR CHICKEN

-\$36-

SPICY STIR-FRIED PORK - 제육 볶음

STIR-FRIED PORK IN SPICY SAUCE WITH  
VEGETABLES.

-\$36-



BOSSAM - 보쌈

BOILED PORK SLICED AND SERVED WITH  
VARIOUS SIDES. GOOD FOR SHARING

-\$45-





# BbQ Friend

YOUR NEXT DOOR KOREAN CUISINE

## -A La Carte-



SEAFOOD PANCAKE - 해물 파전

CRISPY KOREAN STYLED SEAFOOD PANCAKE  
WITH SHRIMP, SQUID, CLAM AND MUSSEL

**-\$22-**

KIMCHI PANCAKE - 김치전

CRISPY KOREAN STYLE PANCAKE WITH KIMCHI  
AND VARIOUS VEGETABLES

**-\$18-**

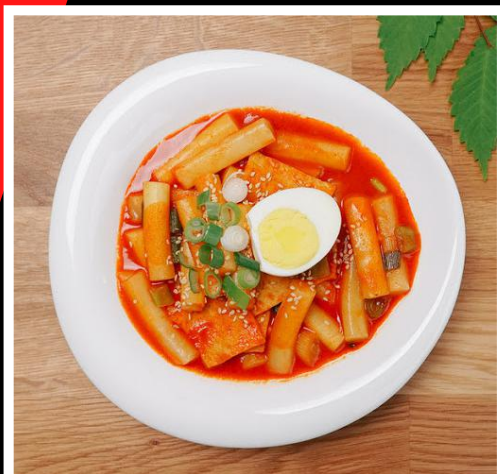




# BBQ Friend

YOUR NEXT DOOR KOREAN CUISINE

## -A La Carte-



DDEOKBOKKI - 떡볶이

RICE CAKE STIR-FRIED WITH FISH CAKE  
AND VEGETABLES IN SWEET AND SPICY SAUCE

-\$16-

FRIED GYOZA - 군만두

CRISPY AND JUICY GYOZA FRIED

-\$15-





# BbQ Friend

YOUR NEXT DOOR KOREAN CUISINE

## -A La Carte-



MUSSEL SOUP - 홍합탕

KOREAN STYLE MUSSEL SOUP WITH CHILLIS AND RADDISH FOR DEEPER TASTE. PERFECT WITH SOJU

**-\$40-**

SEAFOOD FISH CAKE SOUP - 해물오뎅탕

KOREAN STYLE SPICY FISH CAKE SOUP. PERFECT TO GO WITH SOJU

**-\$40-**



GAMJATANG - 감자탕

AUTHENTIC KOREAN SOUP DISH PERFECT FOR SHARING. BOILED PORK BROTH WITH POTATO AND PERILLA LEAVES IS A MUST TRY!

**-\$45-**





# BBQ Friend

YOUR NEXT DOOR KOREAN CUISINE

## -A La Carte-



ARMY STEW - 부대찌개

SPICY STEW MADE WITH HAM, SAUSAGES, BAKED BEANS, KIMCHI AND GOCHUJANG. BBQ FRIEND'S ARMY STEW USE BONE BROTH.

-\$38-

SEAFOOD ZZAMBBONG - 해물짬뽕탕

SPICY SEAFOOD SOUP WITH CHILLIS, VARIOUS SEAFOOD AND VEGETABLES FRIED WITH CHILLI POWDER FIRST TO GIVE IT A SPICY KICK!

-\$45-



KIMCHI JEONGOL - 김치전골

LARGE KIMCHI SOUP PERFECT FOR SHARING. WE USE DUROC PORK BELLY AND HANDMADE TAUKWA TO DIFFERENCIATE FROM THE REST!

-\$36-





# BBQ Friend

YOUR NEXT DOOR KOREAN CUISINE

## -A La Carte-



### SOYBEAN PASTE JEONGOL - 된장 전골

BBQ FRIEND'S FAMOUS SOYBEAN PASTE SOUP THAT COMES IN A LARGE PORTION FOR SHARING. **CHOICE OF CLAM OR BEEF**

**-\$36-**

### SOFT TOFU JEONGOL - 순두부 전골

BBQ FRIEND'S SPICY SOFT TOFU SOUP THAT COMES IN A LARGE PORTION FOR SHARING!  
**CHOICE OF BEEF/CLAM/CHICKEN OR PORK**

**-\$36-**





# BBQ Friend

YOUR NEXT DOOR KOREAN CUISINE

## -A La Carte-



### KIMCHI SOUP - 김치찌개

BBQ FRIEND'S ALL TIME FAVOURITE. WE USE DUROC PORK BELLY AND HANDMADE TAUKWA TO DIFFERENCIATE FROM THE REST!

**-\$15-**

### SOFT TOFU SOUP - 순두부찌개

SPICY SOFT TOFU SOUP WITH SOOTHING AND ADDICTIVE TASTE.

CHOICE OF BEEF/CLAM/CHIKCEN OR PORK

**-\$15-**



### SOYBEAN PASTE SOUP - 된장찌개

BBQ FRIEND'S FAMOUS SOYBEAN PASTE SOUP RICH SOYBEAN FLAVOR IS LOVED BY ALL.

CHOICE OF BEEF OR CLAM

**-\$15-**







# BbQ Friend

YOUR NEXT DOOR KOREAN CUISINE

## -A La Carte-



GINSENG CHICKEN SOUP - 삼계탕

ALL TIME FAVORITE KOREAN DISH PERFECT FOR REJUVENATION WITH GLUTINOUS RICE IN THE CHICKEN.

-\$22-

PORK GOOKBAB - 돼지국밥

BOILED PORK THINLY SLICED AND DROPPED IN THE BONE BROTH TO GIVE IT RICH FLAVOR. SERVED WITH SEASONED CHIVES

-\$18-





# BbQ Friend

YOUR NEXT DOOR KOREAN CUISINE

## -A La Carte-



STEAMED EGG - 계란찜

KOREAN STYLE STEAMED FLUFFY EGG THAT GOES WELL WITH ANYTHING!

-\$7-

STEAM RICE - 공기밥

STEAMING HOT RICE THAT IS PERFECT IF YOU ARE CRAVING FOR THAT CARBS!

-\$2-





# BbQ Friend

YOUR NEXT DOOR KOREAN CUISINE

## -A La Carte-



### SEAFOOD ZZAMBBONG - 해물짬뽕

SPICY SEAFOOD NOODLE WITH CHILLIS,  
VARIOUS SEAFOOD AND VEGETABLES FRIED  
WITH CHILLI POWDER FIRST FOR SPICY KICK!

**-\$18-**

### KOREAN RAMYEON- 라면

RAMYEON WITH VARIOUS CONDIMENTS  
CHOICE OF BEEF/CHICKEN/PORK/KIMCHI/  
CHEESE OR SEAFOOD

**-\$15-**



**-PLAIN RAMYEON AVAILABLE FOR \$12-**



# BbQ Friend

YOUR NEXT DOOR KOREAN CUISINE

## -A La Carte-



COLD NOODLE (BROTH) - 불냉면

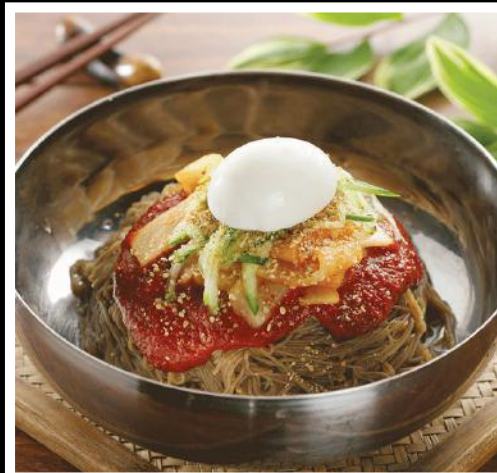
BUCKWHEAT NOODLE IN CHILLED BROTH  
WITH PICKLES AND BOILDED EGG.

-\$15-

COLD NOODLE (SPICY, DRY) - 비빔 냉면

BUCKWHEAT NOODLE IN SPICY CHILLI  
WITH PICKLES AND BOILDED EGG.

-\$15-



YOUR NEXT DOOR KOREAN CUISINE

  
*BBQ Friend*



**ALA  
CARTE**

**- LUNCH ONLY -**



# BbQ Friend

YOUR NEXT DOOR KOREAN CUISINE

## -A La Carte(lunch)-



### JUMBO DONKATSU - 왕 돈카스

HANDMADE KOREAN JUMBO DONKATSU WITH  
HOMEMADE SAUCE. LOOK OUT FOR THE SIZE!

**-\$18-**

### KALGUKSU - 칼국수

KOREAN THICK NOODLE SOUP WITH SOOTHING  
TASTE.

CHOICE OF CHICKEN OR CLAM

**-\$15-**



### SABA FISH SET - 고등어 구이

SABA FISH FILLET GRILLED TO PERFECTION  
SERVED WITH BOWL OF WHITE RICE

**-\$15-**





# BbQ Friend

YOUR NEXT DOOR KOREAN CUISINE

## -A La Carte(lunch)-



BIBIMBAP - 비빔밥

WHITE RICE TOPPED WITH VEGETABLE,  
GOCHUJANG AND EGG.

CHOICE OF BEEF/PORK/CHICKEN OR VEGETARIAN

-\$15-

KIMCHI FRIED RICE - 김치볶음밥

STIR-FRIED KIMCHI FRIED RICE TOPPED  
WITH SUNNY SIDE UP AND A SPRINKLE OF  
KOREAN SEAWEED

-\$15-



YOUR NEXT DOOR KOREAN CUISINE

  
*BBQ Friend*



BEVERAGE



MENU





## -Alcohol-

- |   |      |
|---|------|
| <ul style="list-style-type: none"> <li>• <b>MAKGEOLLI 막걸리</b><br/>TRADITIONAL KOREAN RICE WINE, SWEET AND FIZZY</li> </ul>            | \$22 |
| <ul style="list-style-type: none"> <li>• <b>JINRO SOJU 진로이즈백</b><br/>MOST FAMOUS SOJU IN KOREA, NEATER AND SWEETER</li> </ul>         | \$18 |
| <ul style="list-style-type: none"> <li>• <b>CHAMISEUL 참이슬</b><br/>ORIGINAL SOJU WITH STRONG AFTER TASTE</li> </ul>                    | \$15 |
| <ul style="list-style-type: none"> <li>• <b>CHEOEUM CHEORUM 처음처럼</b><br/>ORIGINAL SOJU WITH WEAKER AFTER TASTE</li> </ul>             | \$15 |
| <ul style="list-style-type: none"> <li>• <b>FLAVOURED SOJU 과일소주</b><br/>AVAILABLE IN <b>GRAPE/ PEACH AND YOGURT FLAVOR</b></li> </ul> | \$15 |
| <ul style="list-style-type: none"> <li>• <b>TERRA 테라</b><br/>BEER THAT PUSHED OUT HITE BEER IN KOREA</li> </ul>                       | \$12 |
| <ul style="list-style-type: none"> <li>• <b>HOFBRAU 호프브라우</b><br/>LIGHT GOLDEN LAGER FROM MUNICH</li> </ul>                           | \$ 8 |

## -Beverages-



- |   |        |
|---|--------|
| <ul style="list-style-type: none"> <li>• <b>COKE 콜라</b><br/>AVAILABLE IN <b>ORIGINAL AND ZERO</b></li> </ul>                        | \$ 3.0 |
| <ul style="list-style-type: none"> <li>• <b>SPRITE 사이다</b></li> </ul>   | \$ 3.0 |
| <ul style="list-style-type: none"> <li>• <b>KOREAN JUICE 갈아만든배 / 봉봉 / 오렌지썩썩</b><br/>PEAR / GRAPE / ORANGE</li> </ul>                | \$ 4.0 |
| <ul style="list-style-type: none"> <li>• <b>SWEET RICE PUNCH 식혜 / 바나나 식혜</b><br/>AVAILABLE IN <b>ORIGINAL AND BANANA</b></li> </ul> | \$ 4.0 |
| <ul style="list-style-type: none"> <li>• <b>ICE LEMON TEA 레몬티</b></li> </ul>  | \$ 3.5 |
| <ul style="list-style-type: none"> <li>• <b>OOLONG TEA 우롱차</b></li> </ul>   | \$ 3.5 |
| <ul style="list-style-type: none"> <li>• <b>JASMINE GREEN TEA 자스민 그린티</b></li> </ul>  | \$ 3.5 |
| <ul style="list-style-type: none"> <li>• <b>AYATAKA GREEN TEA 아야타카 그린티</b></li> </ul>   | \$ 3.5 |
| <ul style="list-style-type: none"> <li>• <b>MINERAL WATER 생수</b></li> </ul>   | \$ 2.0 |