



ASTONS[®]

specialities

Soft Drinks and Water

SW1	Plain Water		\$ 0.5
SW2	Bottled Water	A 0% sugar	\$ 1.8
SW3	Coca-Cola Original (Less Sugar)	C 8% sugar	\$ 2.5
SW4	Coca-Cola Zero Sugar	B 0% sugar	\$ 2.5
SW5	Sprite	B 5% sugar	\$ 2.5
SW6	Fanta Grape	B 5% sugar	\$ 2.5
SW7	Ayataka	A 0% sugar	\$ 2.5
SW8	Iced Lemon Tea	C 9% sugar	\$ 3.0
SW9	IBC Rootbeer	D 11% sugar	\$ 3.8
SW10	Snapple	C 10% sugar	\$ 3.8
	• Kiwi Strawberry	C 10% sugar	
	• Grapeade	C 10% sugar	
	• Mango Madness	C 10% sugar	
	• Pink Lemonade	D 11% sugar	

Juice

JU1	Apple	C 8% sugar	\$ 3.0
JU2	Lime	C 9% sugar	\$ 3.0
JU3	Orange	C 10% sugar	\$ 3.0
JU4	Cranberry	C 9% sugar	\$ 3.0
JU5	Mango	C 9% sugar	\$ 3.0

Coffee

CF1	Freshly Brewed Coffee	A 0% sugar	\$ 2.5
CF2	Iced Coffee Black	A 0% sugar	\$ 3.0
CF3	Espresso	A 0% sugar	\$ 2.5
CF4	Cappuccino	A 0% sugar	\$ 3.8
CF5	Café Mocha	C 7% sugar	\$ 3.8
CF6	Iced Mocha	C 7% sugar	\$ 4.2
CF7	Latte	B 0% sugar	\$ 3.8
CF8	Iced Latte	B 0% sugar	\$ 4.2

Tea

TE1	English Breakfast	A 0% sugar	\$ 2.5
TE2	Earl Grey	A 0% sugar	\$ 2.5
TE3	Green Tea	A 0% sugar	\$ 2.5
TE4	Teh Tarik	C 4% sugar	\$ 2.5
TE5	Iced Teh Tarik	C 4% sugar	\$ 3.0

Cocoa

CM1	Hot Chocolate	C 6% sugar	\$ 3.9
CM2	Iced Chocolate	C 6% sugar	\$ 4.2
CM3	Iced Milo	B 5% sugar	\$ 3.2

Mocktail

MT1	Peach Fizz Peach syrup, lime juice, soda water	D 17% sugar	\$ 3.9
MT2	Passion Delight Passion fruit puree, lime juice, sprite	C 9% sugar	\$ 3.9
MT3	Berry Berries Cranberry juice, wild berries syrup, soda water	D 11% sugar	\$ 3.9
MT4	Sunrise Orange juice, lime juice, grenadine syrup, soda water	C 9% sugar	\$ 3.9
MT5	Mango Fizz Mango juice, soda water, nata de coco, mango poppers	C 8% sugar	\$ 3.9
MT6	Apple Passion Fizz Apple juice, soda water, nata de coco, passion fruit puree, lychee poppers	C 10% sugar	\$ 3.9

Milkshake (Blended)

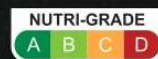
MS1	Chocolate	D 17% sugar	\$ 5.8
MS2	Vanilla	D 11% sugar	\$ 5.8
MS3	Coffee	D 12% sugar	\$ 5.8
MS4	Milo	D 13% sugar	\$ 5.8
MS5	Cookies & Cream	D 13% sugar	\$ 5.8

Float

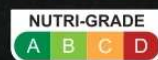
FT1	Coke Float	D 11% sugar	\$ 4.8
FT2	Sprite Float	C 9% sugar	\$ 4.8
FT3	Rootbeer Float	C 9% sugar	\$ 4.8
FT4	Milo Dinosaur Float	D 10% sugar	\$ 5.5

Alcohol

AL1	Heineken Beer	\$ 6.8 glass
AL2	Housepour Red Wine	\$ 8.0 \$ 38.0 bottle
AL3	Housepour White Wine	\$ 8.0 \$ 38.0 glass bottle



For blended ice beverages, Nutri-Grade is based on the preparation with ice.



Nutri-Grade is based on default preparation (before addition of ice).