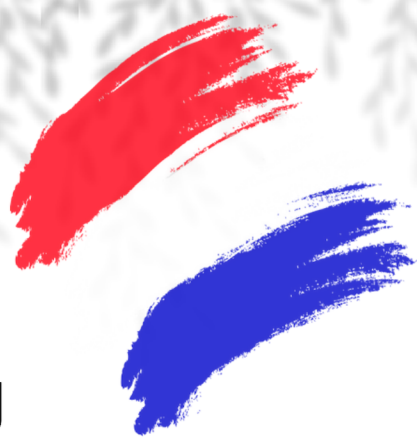


Bistro 32



WINE MENU

Champagne & Sparkling

| | BOTTLE | GLASS |
|--|--------|-------|
| Varichon Et Clerc Blanc de Blanc - Savoie France | 63.0 | 14.5 |
| Pol Roger brut reserve NV | 136.0 | |
| Janz NV | 66.0 | |
| Pommery NV | 126.0 | |

White Wine

| | | |
|---|------|------|
| Domaine de Bila Haut Cotes du Roussillon | 49.0 | 15.5 |
| Maison Thorin Macon Villages - Beaujolais France | 49.0 | 15.5 |
| Chablis Domaine Alan Gautheron | 75.0 | |
| Sancerre Pascale Jolivert | 79.0 | |
| Alsace pinot Blanc famille Hugel | 58.5 | 15.5 |
| Yealands Estate Sauvignon Blanc (Marlborough N.Z.) | 59.0 | |
| Firebird Sauvignon Blanc (Adelaide Hills) | 49.0 | 15.5 |
| Wilson Vineyard DJW Riesling (Clare Valley) | 47.5 | 13.5 |
| Sirenya Pinot Grigio (Adelaide Hills) | 49.0 | |
| Babydoll Pinot Gris (Marlborough N.Z.) | 49.5 | 15.5 |
| Margan Estate Chardonnay (Hunter Valley) | 59.0 | |
| Helens Hill Breachley Block Chardonnay (Yarra Valley) | 58.0 | 15.5 |

Rose

| | | |
|------------------------------------|------|------|
| Bouchard Aine et Fils | 49.0 | 15.0 |
| Chateau Ferrages Cotes du Provence | 59.0 | |

Reds

| | | |
|--|------|------|
| La Ciboise Luberon Rouge | 49.0 | 15.0 |
| Marchand & Burch Bourgogne Pinot Noir | 89.0 | |
| Cotes du Rhone Chapoutier Bellaruche | 66.0 | |
| Cornas Chapoutier Les Arenas | 73.0 | |
| Chateau Grand Jean Superieur - Bordeaux France | 69.0 | 15.5 |
| Paringa Estate Pinot Noir (Mornington) | 59.0 | 15.5 |
| Tarrawarra Estate Pinot Noir (Yarra Valley) | 69.0 | |
| Peter Lehmann Temperrillo (Barossa) | 46.0 | 15.5 |
| Teusner Wark Family Shiraz (Barossa) | 53.0 | 15.5 |
| Geoff Merrill G & W Cabernet Sauvignon (Coonawarra) | 57.0 | |
| Howard Park Miamup Cabernet Sauvignon (Margaret River) | 57.0 | 15.5 |
| Majella Musician Cabernet Shiraz (Coonawarra) | 55.0 | |