



牡丹

BOTAN

Takeaway Dinner Set

Botan Japanese Restaurant
36-37 Pekin Street, #01-01 Far East Square, Singapore (048767)
Hotline: 6536 4404 - 9271 5004

📍 Botan Japan
🌐 botanjapanese
📧 botan@singnet.com.sg



牡丹

BOTAN

Chef  Chef's Recommendation

BOTAN

Japanese restaurant

Located at Pekin Street, is a traditional Japanese restaurant that prides itself on using premium ingredients air-flown from Japan including fresh Otoro, Kuruma Ebi, A5 Miyazaki Wagyu Beef, Hokkaido Snow Beef and Hokkaido Pork. The restaurant specialises in Omakase, Bento sets, Sushi and Sashimi.

The restaurant has a cosy ambience, ideal for business lunches, company events and dinner with your family and loved ones.

Tantalise your palate with signature dishes including Fugu Mirin Boshi (Grilled Marinated Pufferfish), Pitan Tofu, Monkfish Liver, Asari Clear Clam Soup, Premium Sushi and Sashimi, Crispy Maki, A5 Miyazaki Wagyu Beef, Tempura, Hokkaido Pork Honey Black Pepper Yaki, Hokkaido Snow Beef Don and more.

A pioneer of the Japanese food scene in Singapore, Executive Chef, Thomas Kok has over four decades of experience in Japanese cooking under his belt. With a passion for Japanese cuisine, he was one of the first few chefs who introduced Japanese food to Singapore in the early 1980s. Chef Thomas has also overseen the openings of many restaurants here and in Hong Kong.

Chef Thomas honed his skills in several renowned restaurants including Nanten Japanese Restaurant at Hong Leong Building, Denon Japanese Restaurant at Philip Street, Kaisen at Raffles Hotel Singapore, Hokkaido Sushi at M Hotel Singapore, Hokkai Villa and jIN Fine Dining at Amoy Hotel. In 2009, under his leadership, Hokkaido Sushi attained No. 1 position in the AsiaOne People's Choice Awards.

A creative and meticulous individual, Chef Thomas takes pride in using fresh, premium ingredients executed with innovative flair using contemporary cooking methods.



Omakase

\$140

APPETIZER

ZENSAI (3 KINDS)
PITAN TOFU
SASHIMI MORI (5 KINDS)
IKURA CHAWANMUSHI

MAIN

YAKISAKANA
SAGA WAGYU
KURUMA EBI
SUSHI (3 - PCS)

DESSERT

ICE CREAM

\$211

APPETIZER

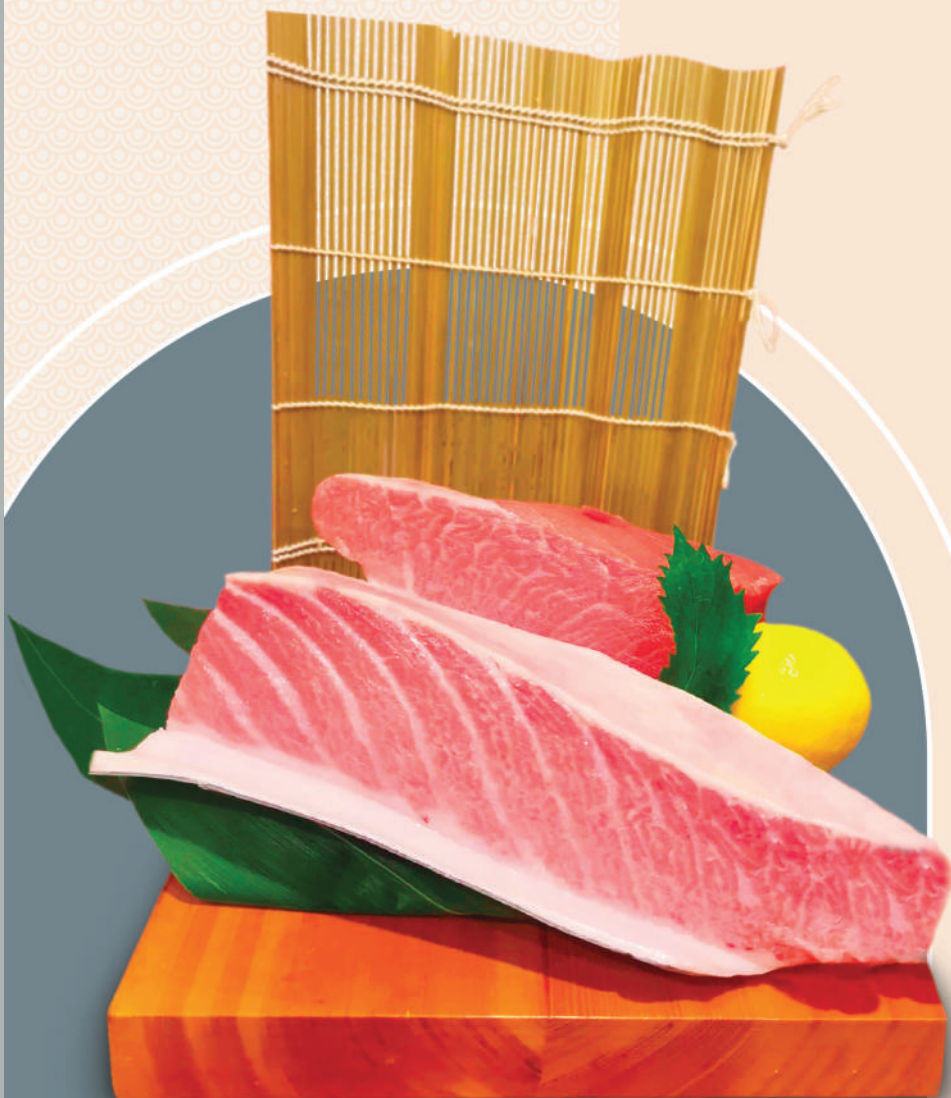
JAPANESE ONSEN TAMAGO
ZENSAI (3 KINDS)
JAPAN FRUITS TOMATO
SASHIMI MORI (5 KINDS)
FOIE - GRAS CHAWANMUSHI

MAIN

NODOGURO SHIOYAKI
SAGA WAGYU
ANAGO TENPURA
SAKANAN NYUMEN

DESSERT

ICE CREAM



\$53

Chef 

CHIRASHI BENTO SET

Assorted Raw Fish topped on Seasoned Rice Lunch Box, Kobachi, Grilled Eel, Assorted Tempura, Grilled Chicken with Sweet Sauce, Chawanmushi, Miso Soup & Fruits

Chef 

\$59

BUSINESS BENTO SET

Assorted Tempura, Sashimi & Nigiri, Grilled Salmon with Teriyaki Sauce, Stir-fried Hokkaido Snow Beef served with Miso soup & Chawanmushi



All Prices are subject to Service Charge and prevailing GST.

Dinner set



SASHIMI / TENPURA & UNAGI KABAYAKI SET

\$45

Assorted Sashimi or Tenpura & Grilled Freshwater Eel with Kabayaki Sauce

Above dinner sets are served with salad, chawanmushi, miso soup & rice

1. SASHIMI / TENPURA & SABA SHIO SET
Assorted Sashimi or Tenpura & Horse Mackerel with Salt
2. TENPURA SET
Assorted Tenpura
3. SASHIMI SET
Assorted Raw Fish
4. LADIES SET
California roll, Raw Fish, Mixed Tenpura, Salad, Chawanmuchi, Miso Soup/ Udon/ Soba & Rice Cake and Ice Cream
-  5. SASHIMI / TENPURA & HAMACHI KAMA SET
Assorted Sashimi or Tenpura & Grilled Yellowtail Collar
-  6. SASHIMI / TENPURA & GINDARA (TERIYAKI / SHIOYAKI / MENTAIYAKI) SET
Assorted Sashimi or Tenpura & Cod Fish with choice of Teriyaki or Mentaiko Sauce
-  7. SUSHI GOZEN SET
Assorted Sashimi, Nigiri Sushi & Tenpura
-  8. SASHIMI / TENPURA & HOKKAIDO TON KATSU SET
Assorted Sashimi or Tenpura & Deep-fried Hokkaido Pork Cutlet
9. SASHIMI / TENPURA & KIMCHI HOKKAIDO PORK BELLY ITAME SET
Pan fried Hokkaido pork with kimchi
-  10. SASHIMI / TENPURA & WAGYU BEEF BURGER STEAK SET
Assorted Sashimi or Tenpura & Wagyu Burger Steak with Special Homemade Sauce
-  11. SASHIMI / TENPURA & HOKKAIDO SNOW BEEF SET
Assorted Sashimi or Tenpura & Stir-fried Hokkaido Snow Beef with Assorted Mushrooms in Yakiniku Sauce
-  12. SASHIMI / TENPURA & WAGYU BEEF KATSU SET
Assorted Sashimi or Tenpura & Wagyu Beef Cutlet
13. SASHIMI / TENPURA & CHICKEN TERIYAKI SET
Assorted Sashimi or Assorted Tenpura or Chicken with Sweet Sauce

\$29

\$41

\$42

\$45

\$45

\$49

\$53

\$40

\$56

\$41

\$42

\$45

\$28



All Prices are subject to Service Charge and prevailing GST.



牡丹

BOTAN

Thank
you

Botan Japanese Restaurant
36-37 Pekin Street, #01-01 Far East Square, Singapore (048767)
Hotline: 9823 1939

📍 Botan Japan
🌐 botanjapanese
✉ botan@singnet.com.sg



Scan to visit our fanpage