

SUSHI AND SASHIMI

SUSHI: A small piece of vinegared rice with a raw fish on top

1. Large SUSHI..... \$29.00

(Assorted Nigiri 10p & Small Sushi Rolls 6p)

2. Small SUSHI.....\$15.00

(Assorted Nigiri 5p & Small Sushi Rolls 3p)

3. CHIRASHI SUSHI\$18.00

(Assorted Sashimi on Sushi Rice)

4. POKEDON\$16.50

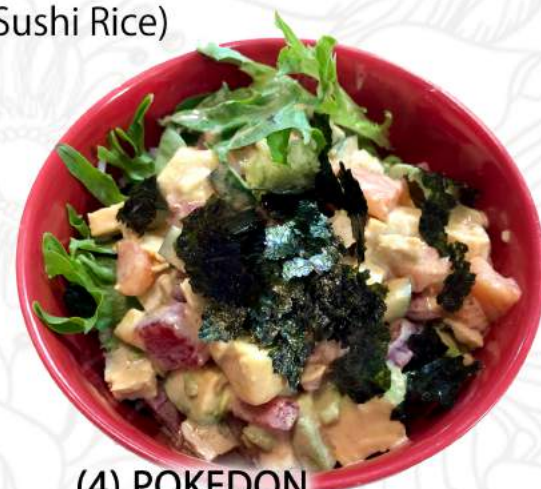
(Cubes of assorted Sashimi, avocado, egg, cucumber on Sushi Rice)



(3) CHIRASHI SUSHI



(1) Large SUSHI



(4) POKEDON

5. TUNA SUSHI (2p).....\$6.50

6. KING FISH SUSHI (2p).....\$6.50

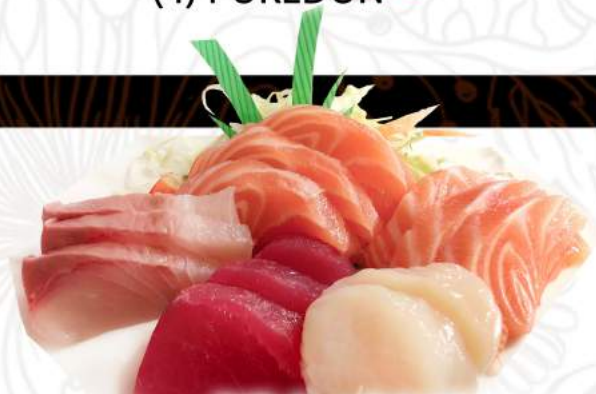
7. SALMON SUSHI (2p).....\$6.50

8. PRAWN SUSHI (2p).....\$6.50

9. EGG SUSHI (2p).....\$4.50

10. EEL SUSHI (2p).....\$10.80

11. INARI SUSHI (2p).....\$4.50



(13) Small SASHIMI

SASHIMI: Slices of raw fish

12. Large SASHIMI \$33.00

13. Small SASHIMI \$17.00

14. TUNA SASHIMI (5p).....\$12.00

15. KING FISH SASHIMI (5p) \$12.00

16. SALMON SASHIMI (5p) ...\$12.00

*All pictures are for reference only.

DONBURI (RICE BOWL DISH)

1. KATSU DON

Choice of deep fried Chicken or Pork cutlet, onion, egg on rice



\$12.00

2. OYAKO DON

Chicken, onion and egg cooked in sweet and salty broth on rice



\$12.00

3. CHICKEN TERI DON

Chicken teriyaki with lettuce & mayo on rice



\$12.00

4. CHILLI TOFU DON

Soy bean curd & minced pork in chilli soup on rice



\$12.00

5. BUTA DON

Pork ginger with lettuce & mayo on rice



\$12.00

6. BEEF TERI DON

Beef teriyaki with lettuce & mayo on rice



\$13.80

7. CURRY DON

Curry chicken on rice



\$12.00

8. KATSU CURRY RICE

Choice of Chicken or Pork Katsu curry on rice



\$15.00

9. TEN DON

Tempura (2 prawns, fish and veges) on rice



\$13.80

10. UNA DON

Charcoal grilled eel on rice



\$18.00

*All pictures are for reference only.

MAIN DISHES (Served with rice)

1. TEMPURA COMBINATION

Lightly battered deep fried
3 prawns, 1 fish and vegetables



\$15.80

2. TERIYAKI CHICKEN

Barbecued chicken in
teriyaki sauce



\$14.50

3. TERIYAKI BEEF

Thin slices of beef in marinated
garlic and teriyaki sauce



\$16.80

4. TEMPURA VEGES

Lightly battered deep fried
vegetables



\$13.80

5. PORK GINGER

Thin slices of pork with
ginger and teriyaki sauce



\$16.00

6. CHILLI BEEF

Stir fry beef with capsicum,
carrot, onion and fresh chilli



\$16.80

7. SAKANA FURAI

Lightly crumbed deep fried fish
with tonkatsu sauce



\$14.50

8. CHICKEN KATSU

Lightly crumbed deep fried
chicken with tonkatsu sauce



\$15.00

9. TON KATSU

Lightly crumbed deep fried
pork cutlet with tonkatsu sauce



\$17.00

10. TERIYAKI FISH

Barbecued fish in
teriyaki sauce



\$14.50

11. TERIYAKI SALMON

Barbecued salmon in
teriyaki sauce



\$18.00

12. FRIED SALMON

Pan fried salmon



\$18.00

13. SHOKADO BENTO

Sashimi, tempura, teriyaki chicken, fish with rice and
miso soup



\$22.00

14. TEMPURA PRAWN (5 PCS)

Lightly battered deep fried 5 prawns
and vegetables



\$19.80

*All pictures are for reference only.

NOODLES

1. TORI UDON

Noodles and chicken in soup



\$10.00

2. TEMPURA UDON

Tempura with Udon noodles soup



\$13.80

3. HIYASHI SOBA / RAMEN

Cold noodles with assorted toppings



\$15.80

4. KAMO SEIRO

Cold soba noodles with hot duck soup



\$15.80

5. CURRY UDON

Noodles with chicken, onion and spring onion in curry soup



\$12.00

6. CHIGE UDON

Noodles with chicken, seafood and egg in spicy soup



\$15.80

7. ZARU SOBA

Cold noodles with dipping sauce



\$12.00

8. RAMEN

Ramen noodles with a choice of Tonkotsu or Shoyu soup base



\$9.80

9. TENZARU SOBA

Cold noodles with tempura and dipping sauce

\$15.80



Available for Dine-in Only

1. CHIGE NABE (served with rice)
Seafood, chicken, egg and vegetable
cooked with spicy hot soup in pot



\$15.80

2. KABUTONI (served with rice)
King fish/Salmon wing (half)
simmered in sweet soy sauce



\$19.80

3. NABEYAKI UDON

Noodles with chicken, egg, fish cake,
onion and prawn in soup in pot



\$15.80

4. NIZAKANA (served with rice)
Fish of the day simmered
in sweet soy sauce



\$19.80

COOKED AT THE TABLE

(Minimum serve for two, served with rice)

5. SUKIYAKI

Thinly sliced beef, vegetables, cooked in
Sukiyaki stock (Comes with raw egg for dipping)



\$42.00

6. YOSENABE

Seafood, chicken and vegetables
cooked in a tasty broth



\$39.00

DESSERT

7. VANILLA ICE CREAM

\$3.50

8. OGURA ICE CREAM

Vanilla Ice Cream
with sweet red beans \$4.50



9. MATCHA ICE CREAM

Green Tea Ice cream

\$4.50

10. OGURA MATCHA ICE CREAM

Green Tea Ice cream with sweet red beans



\$5.50

DRINKS

Japanese Tea (pot) \$2.00

Japanese Tea (cup) \$1.50

Fresh Drinks \$2.50 ~ \$4.80